

Comments made by William Dove, Friday April 26, 2013 to the Awards Banquet of the Wisconsin Medical Alumni Association. He was presented with the Basic Sciences Emeritus Faculty Award by Associate Dean Rick Moss.

Thank you, Rick, for your introduction. On the basis of your generous plaudits, I did not recognize whom you were speaking about, but I presume it was me.

I am grateful to be chosen for this Award by the alumni of the School. Many an Emeritus faculty member hopes to keep contributing to research. For me, our small, able research team and the continuing support of the McArdle Laboratory together deserve full credit for the new knowledge we are creating.

Let me introduce my guests around the table. First, I recognize my nominator Mike Culbertson, chairman of the Laboratory of Genetics, and his wife Claire. My teaching has been centered in the graduate genetics program. By maintaining a *trans*-campus presence in both the School and the College of Agriculture and Life Sciences, the Laboratory of Genetics illustrates the story I shall be telling. Next, I appreciate the on-going support of Jim Shull, chairman of the McArdle Laboratory for Cancer Research. McArdle is the home base of my research. Third, I honor the commitment of two colleagues from the School who actively connect basic research with our medical students: Bill Sugden from McArdle and Donata Oertel from Neuroscience. And finally, my supportive family is represented by our son-in-law Miguel Garcia-Gosalvez, our daughter Suzanne, and my wife and research collaborator Alexandra.

Let me tell you a story entitled "The Whole University."

The Long Thread of the Dove Family



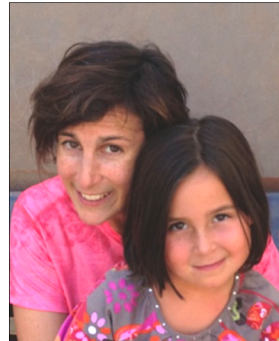
Franklin Dove
Graduate student



William
McArdle Alexandra
McArdle
Academic Staff



Patrick
Comp. Lit.
BS Deborah
Comp. Lit.
BS



Suzanne
Business
Academic Staff Miranda
Restoration
Ecology



Louis (New Jersey)
Limnology,
Cartography

Grandparents University

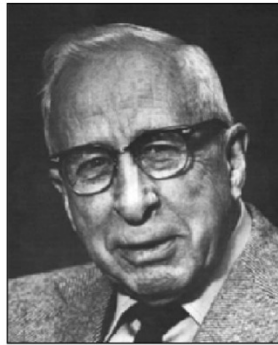
My family's 90-year, four-generation connection with our university began with my father Franklin Dove, coming from a farm in Iowa to study genetics. A generation later Alexandra and I came here from the East via England. Our son Patrick and his wife Deborah met while earning first degrees in Comparative Literature at UW. Then, Miguel and Suzanne came from Barcelona and DC. And finally Miranda from Madison and Louis from New Jersey will soon enter Wisconsin's signature Grandparents University.

Will our University continue to gather excellence from Wisconsin and around the world for another 90 years, into the next century?

The Self-renewing Fabric of our University



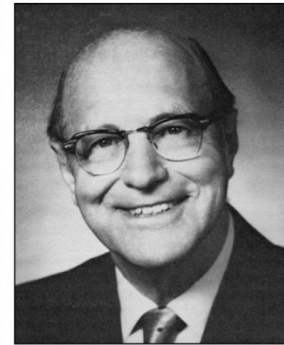
Charles R. Bardeen
(1871-1935)
Anatomy



Harland W. Mossman
(1898-1991)
Embryology



James Crow
(1916-2012)
Genetics



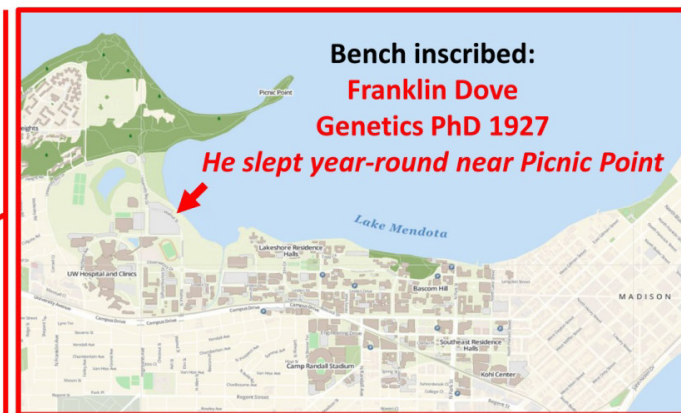
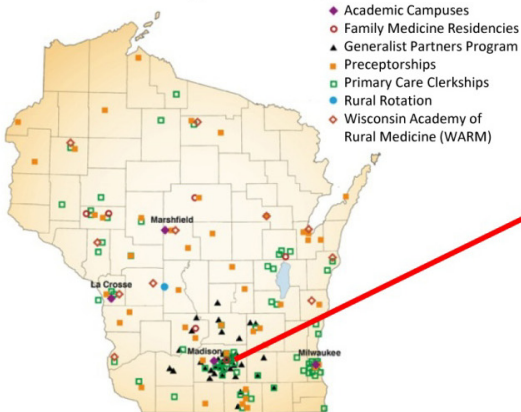
Harold Rusch
(1908-1988)
Cancer
Basic research
Clinical practice

Our university self-renews on a scaffold of a fabric woven between different threads. Franklin Dove, doing research in genetics, studied anatomy with Charles Bardeen and embryology with Harland Mossman. Working in McArdle, with a background in chemistry, my command over genetics has been developed by working for several decades with James Crow. Finally, the man who hired me, Harold Rusch, first established basic cancer research in McArdle and then fostered clinical cancer research. To the end of his life, Harold kept in touch with my progress from our molecular genetic studies of the control of the growth of viruses to our molecular and cellular analysis of the biology of colon cancer in animal models.

Each of these faculty leaders has been a citizen of the university at large. My neighbor Bob Schilling, who is here tonight, is cut from the same cloth.

Given this fabric, our university is sustained by its influx of eager students. Franklin Dove supported himself by living outdoors, near Picnic Point, making his meals over a Bunsen burner in the lab. Tonight I have been impressed by the many ways that the alumni of our School support today's new students with scholarships, rural rotations, preceptorships, family medicine residencies, and other initiatives throughout the state.

Connecting through Students



Thus, each of us here tonight supports in individual ways the self-renewal of our whole university within our whole state.

ON WISCONSIN