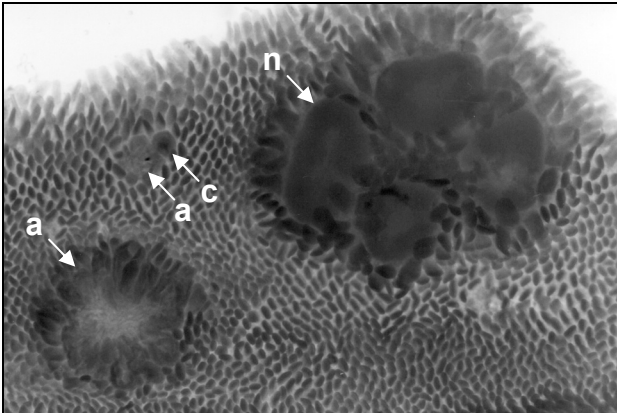
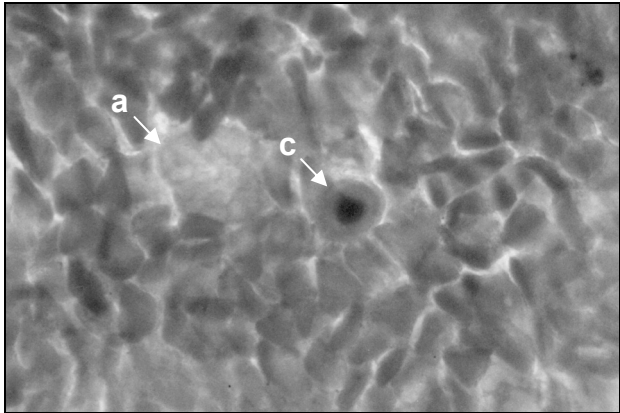


**Isolation and analysis of the intestinal tract and its lesions**

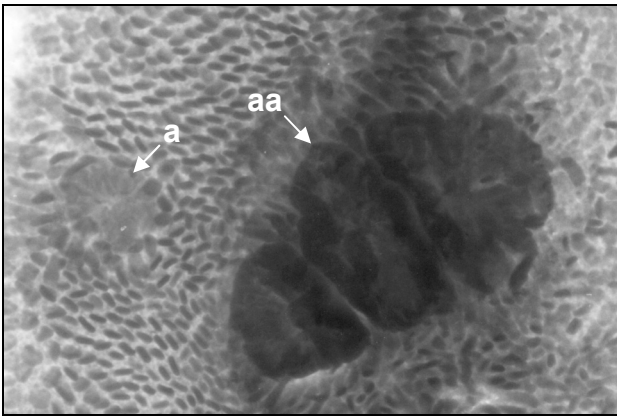
*Examples*



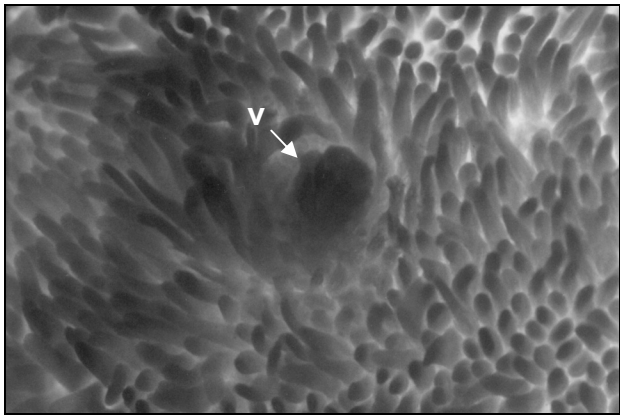
A. Adenomas (a), cystic crypt (c) and lymph node (n)



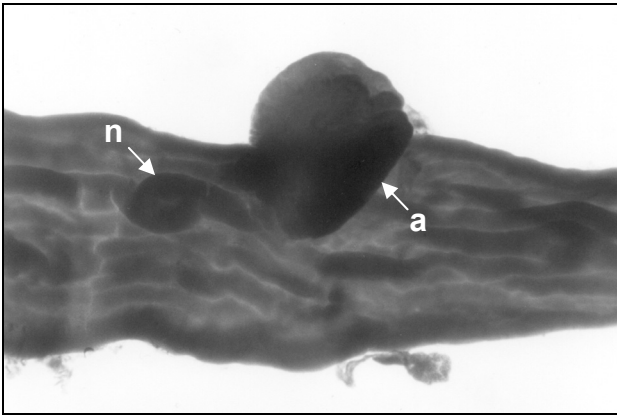
B. Small adenoma (a) and cystic crypt (c)



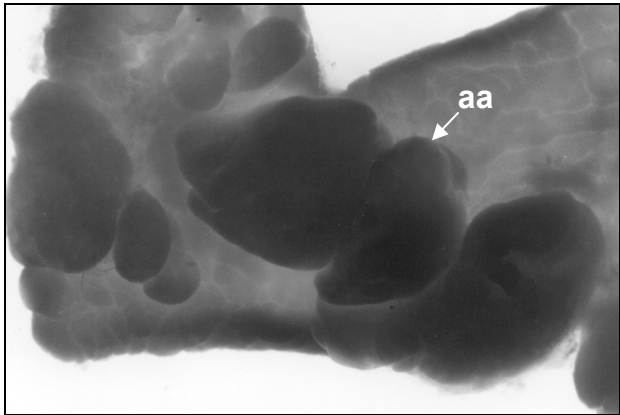
C. Flat adenoma (a) and adenoma cluster (aa)



D. Ampulla of Vater (v)



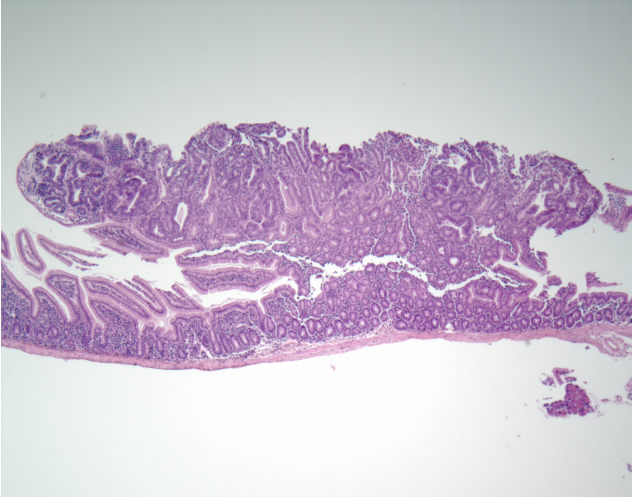
E. Lymph node (n) and adenoma (a) in colon



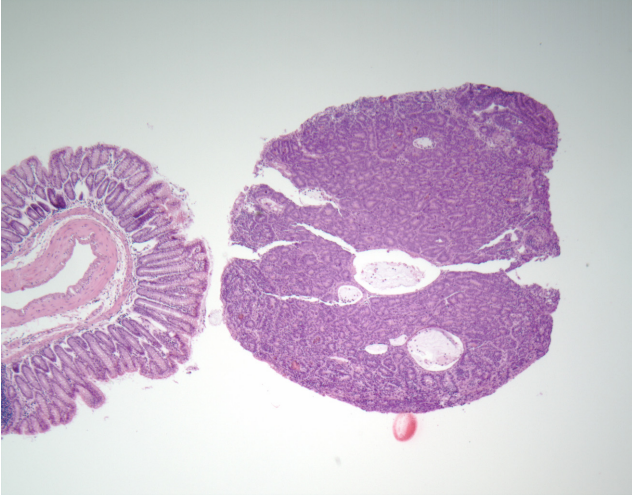
F. Adenoma cluster (aa) in colon

**Staining sections with hematoxylin and eosin**

*Examples*



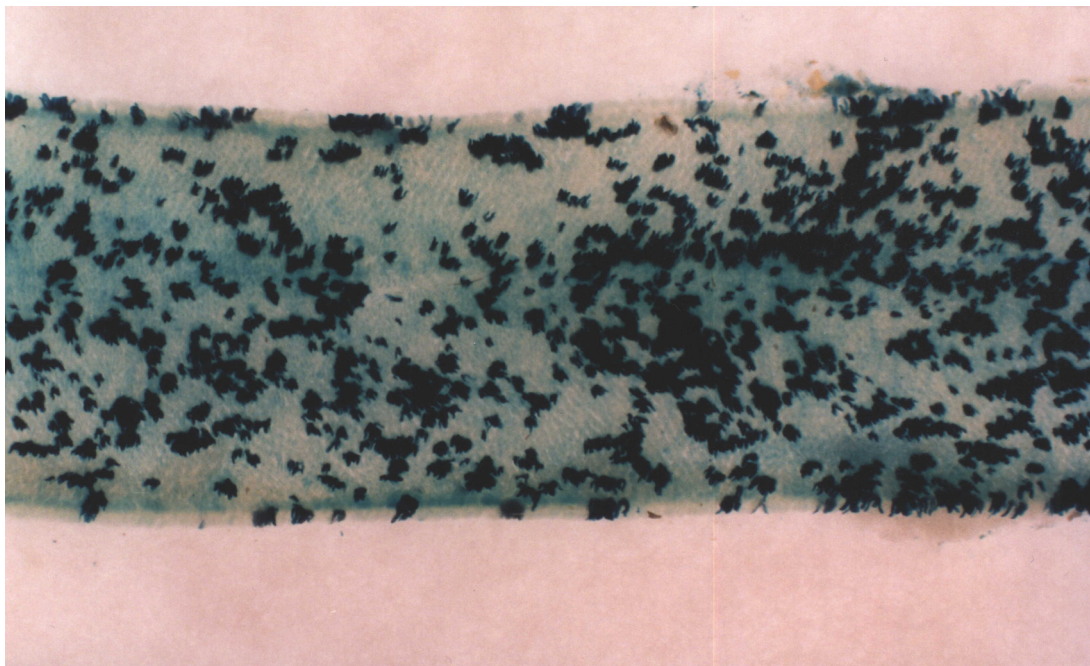
A. Small intestine tumor, H&E



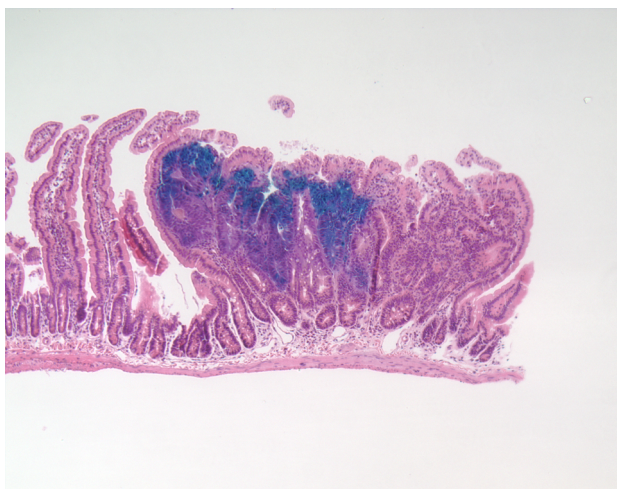
B. Colon tumor, H&E

## Detecting $\beta$ -galactosidase Activity in Whole Mounts Aggregation chimeras

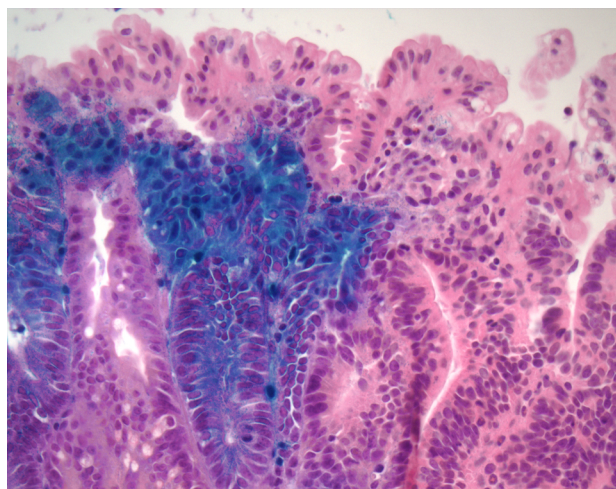
### *Examples*



A. Small intestine from chimera stained with Xgal



B. Section of a polyclonal tumor from a chimera



C. Enlargement of B.